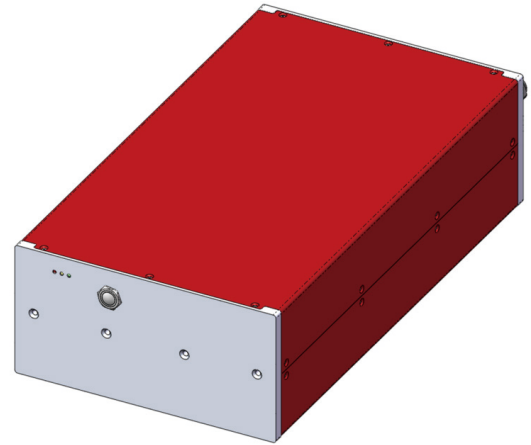


Diode Laser with Red Light Series 200W

Product Description

200W Diode Laser with Red Light Indicator :
Diode laser used for welding.



Application Advantages

- Output power can be customized according to specific needs
- Different laser lenses can be configured according to specific working modes
- Software-controlled beam emission enables enhanced versatility in laser applications

Specifications

Parameter Unit	Unit	Parameter
Laser Type		200W Laser Light Source
Model Number		S0915200YF
Wavelength	nm	915
Center Wavelength Deviation		±10
Indicator Light		Red Light
Average Power	W	200
Power Requirements	V	220

Parameter Unit	Unit	Parameter
Average Power Consumption	W	560
Power Regulation Mode		Internal / External Control Analog Quantity
Operating Temp.&Rh	°C	20~30; <80%
Dimension	mm	420×234×118
Weight	kg	≈10
Cooling		Water-Cooled