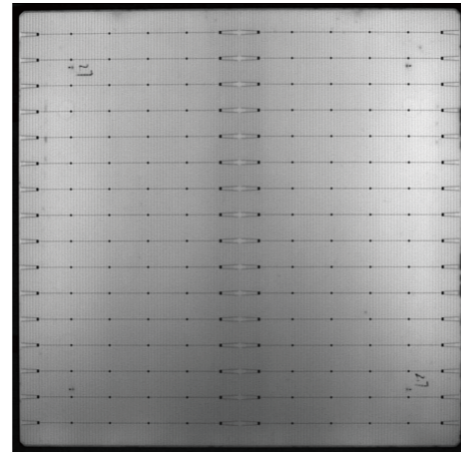
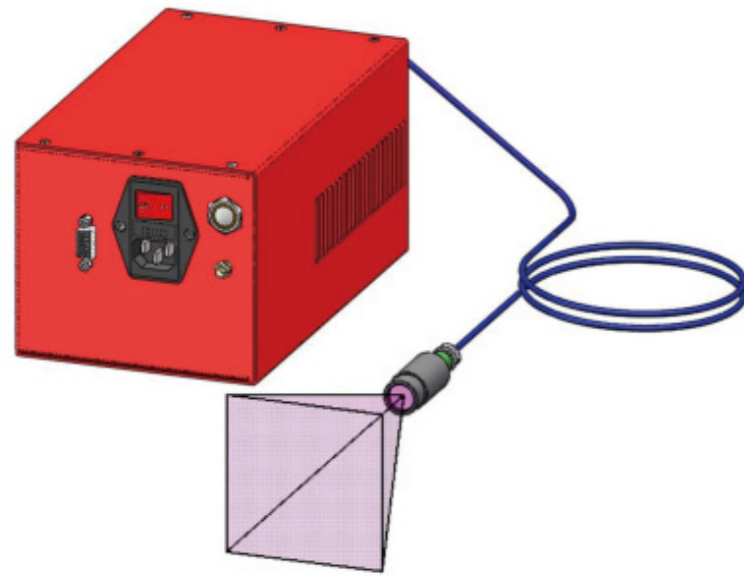


Square Light Spot Diode Laser 50W



Camera capture diagram

Product Description

50W square beam diode laser: using for defect detection of photovoltaic wafer

Application Advantages

- Output power can be customized according to specific needs
- High beam uniformity is conducive to fluorescence imaging capturing by cameras
- Software-controlled beam emission enables enhanced versatility in laser applications

Specifications

Parameter	Unit	Parameter
Laser Type		50W Diode Laser Source (Square Light Spot)
Model Number	W	808-50
Wavelength	nm	808
Center Wavelength Deviation		±5
Average Power	W	50
Typical Working Distance	mm	230~260
Detectable Wafer Size	mm	≤230
Power Requirement	V	220
IO Interface	V	White 0~24+ / Black 0~0.5-
Average Power Consumption	W	130
Beam Emission Control		IO Interface
Power Regulation Mode		GUI
Operating Temp.&Rh	°C	20°C~30°C; <80%
Dimension	mm	232×140×122
Weight	kg	≈5
Cooling		Air Cooled