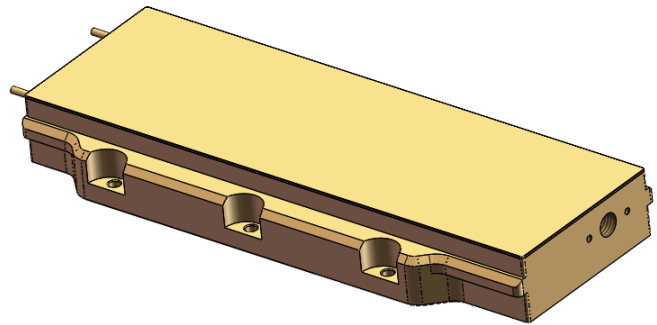


# 450nm—100W High Power Diode Laser

## Product Description

450nm series fiber coupled diode laser



## Key Features

- Multi-single tube space output, high reliability

## Applications

- Material processing

## Specifications

Parameter Unit	Unit	Parameter
Product Model		450nm—100W
Output Power	W	100
Wavelength	nm	450±5
Threshold Current	A	0.4
Operating Current	A	3
Operating Voltage	V	95
Operating Temp.	°C	15~35

Parameter Unit	Unit	Parameter
Storage Temp.	°C	-20~85
Dimension	mm	230×65×43
Weight	g	≈441
Beam Pattern		Collimated Beam
Beam Parameter	mm	≤6×6
Mode of Work		QCW/CW

· Customizable products allow flexible configuration of model parameters according to specific needs.