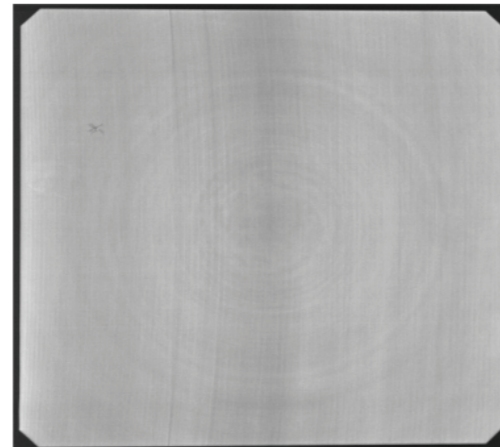


Diode Laser 200W (Air Cooled)



Camera capture diagram

Product Description

200W diode laser: using for defect detection of photovoltaic wafer

Application Advantages

- Output power can be customized according to specific needs
- Different laser lenses can be configured according to different working distances
- Software-controlled beam emission enables enhanced versatility in laser applications

Specifications

Parameter	Unit	Parameter
Laser Type		200W Laser Light Source
Model Number		L09150200YB
Wavelength	nm	915
Center Wavelength Deviation		±10
Average Power	W	200W
The Angle of Lens Dispersion	°	75
Typical Working Distance	mm	230~260
Detectable Wafer Size	mm	≤230
Power Requirement	V	220V
Average Power Consumption	W	560W
Beam Emission Control		Internal/External Control Enabled
Power Regulation Mode		Internal Control/External Control Analog Quantity
Operating Temp.&Rh	°C	20~30; <80%
Dimension	mm	191.5×284×163
Weight	kg	≈10kg
Cooling		Air Cooled
Applicable Technology		Original Film