

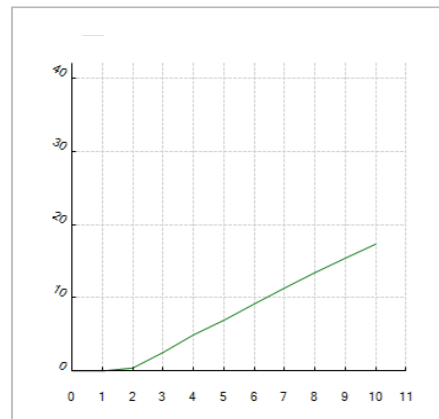
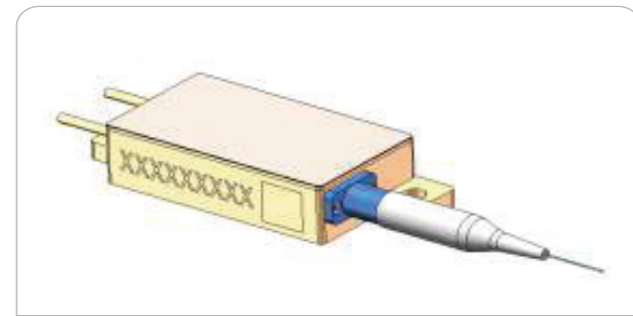
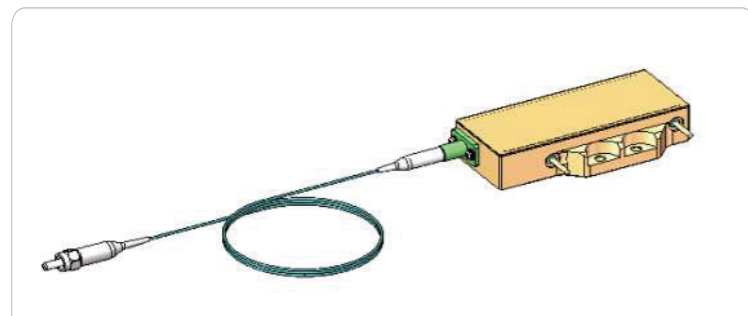
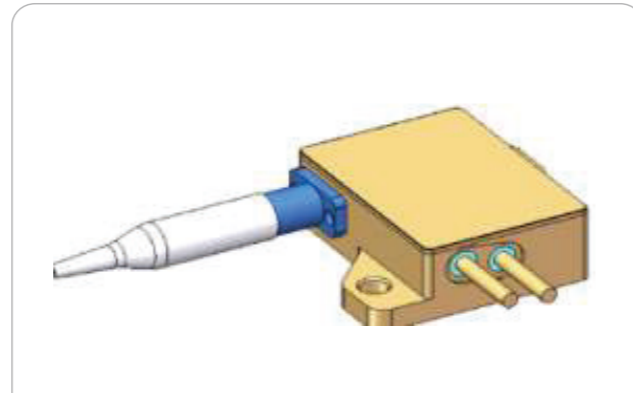
808nm Series Diode Laser

Product Description

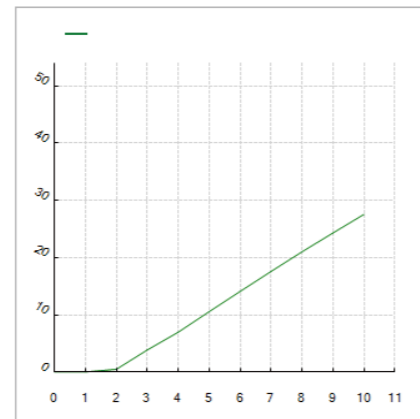
808nm series fiber coupled high power diode laser

Application Advantages

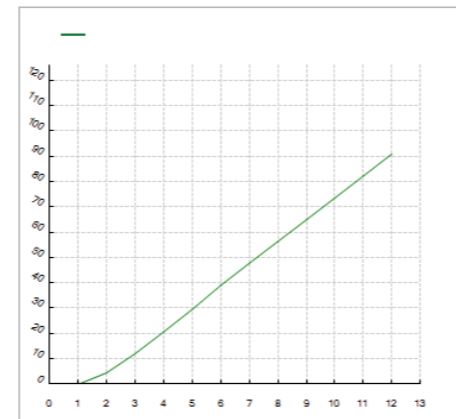
- Multiple single emitter based diode laser, high reliability
- 1040-1200nm feedback protection



16W Power curve



25W Power curve



50W Power curve

Specifications

Parameter	Unit	Parameter			
Product Model		808-8W	808-16W	808-25W	808-50W
Output Power	W	8	16	25	50
Central Emission Wavelength	nm	808			
Spectral Width (Fwhm)	nm	6			
95% Power Within NA	NA	0.2			
Anti-reflection Range	nm	1040~1200			
Conversion Efficiency	%	50			
Threshold Current	A	1.8			
Operating Current	A	12			
Operating Voltage	V	1.8	3.6	5.4	14.5
Core Diameter	μm	400			
Fiber Clad Diameter	μm	440			
Operating Temp.	$^{\circ}\text{C}$	15~40			
Storage Temp.	$^{\circ}\text{C}$	-20~85			
Wavelength Temperature Coefficient	nm/ $^{\circ}\text{C}$	0.3			
Dimension	mm	62.5×29×10.02	71×42×11.02	77×38.5×10.95	122.5×48×17
Weight	g	≈40	≈87.8	≈92	≈310

· Customizable products allow flexible configuration of model parameters according to specific needs.